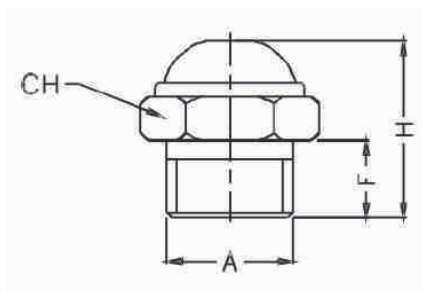


Silenciador

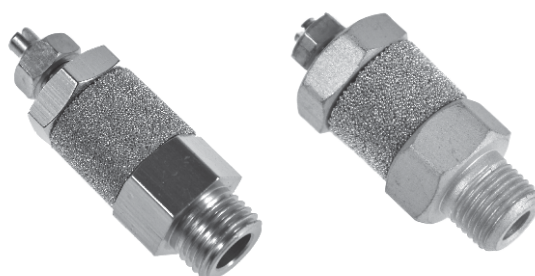


Dimensional (mm)

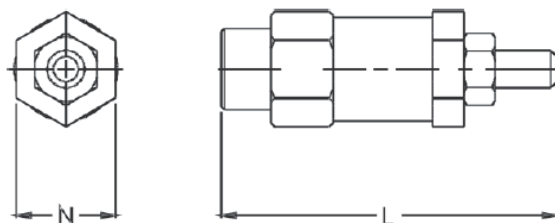


CORPO DE LATÃO COM ELEMENTO DE BRONZE SINTERIZADO	CORPO DE LATÃO CROMADO COM TELA DE FIO DE AÇO INOX				
		A	F	H	CH
V-6	STA-18	1/8"	4	10	10
V-8	STA-14	1/4"	5	13	12
V-10	STA-38	3/8"	6	16	16
V-15	STA-12	1/2"	7	19	21
V-20	STA-34	3/4"	8	21	27
-	STA-10	1"	12	28	36
V-M5	-	M5	4	8	8

Silenciador com controle de fluxo

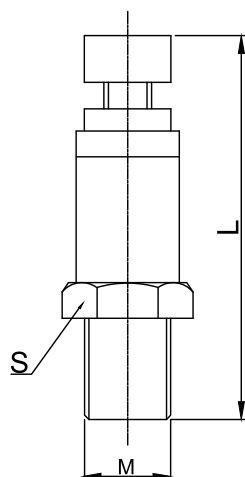


Dimensional (mm)

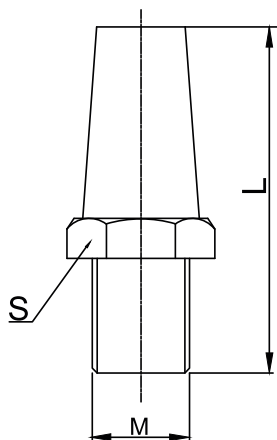


ROSCA BSP	REFERÊNCIA	L	SEXT. N	REFERÊNCIA IMPORTADA
1/8"	6218-CV	46	5/8"	-
1/4"	-	50	5/8"	6214-CVI

Silenciador

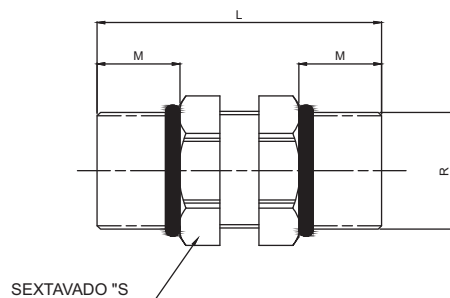
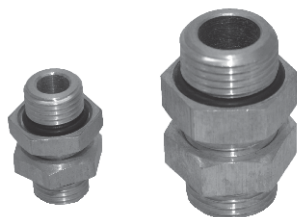


REFERÊNCIA	L	S	M
BESL-6	33	12	1/8"BSP
BESL-8	35	14	1/4"BSP
BESL-10	43	17	3/8"BSP
BESL-15	50	21	1/2"BSP



REFERÊNCIA	L	S	M
BSL-M5	17	8	M5
BSL-06	24	13	1/8"BSP
BSL-08	33	17	1/4"BSP
BSL-10	44	22	3/8"BSP
BSL-15	49	24	1/2"BSP
BSL-20	57	30	3/4"BSP

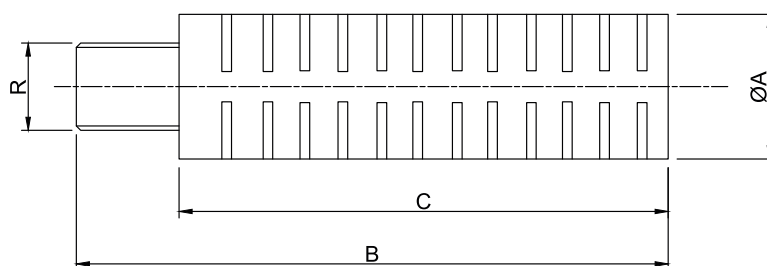
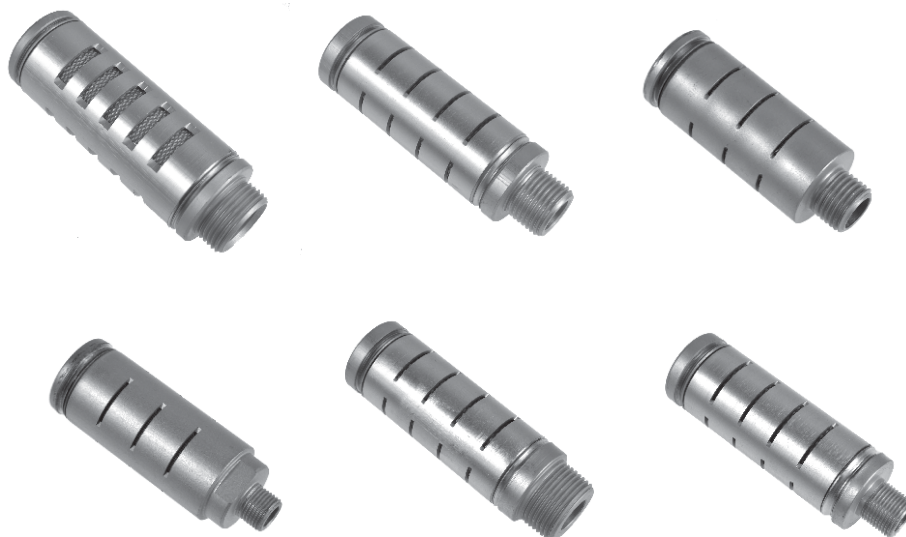
Niple



REFERÊNCIA	Sext "S"	R	L	M
CJN-1818	14	1/8" BSP	26	7
CJN-1414	18	1/4" BSP	30	7
CJN-3838	22	3/8" BSP	33	9
CJN-1212	25,4	1/2" BSP	44	10

Composto por:
 2 porcas de regulagem
 2 vedações o'ring
 1 niple

Silenciador tipo charuto em Alumínio



REF.	R	ØA	B	C
7118-PEQ	1/8"BSP	22	63,5	56
7114-PEQ	1/4"BSP	22	59,5	50
7138-PEQ	3/8"BSP	32	104	88
7112-PEQ	1/2"BSP	32	104	88
7134-PEQ	3/4"BSP	32	104	88
7134-GR	3/4"BSP	44,5	134	118
7111-GR	1"BSP	44,5	133	118